



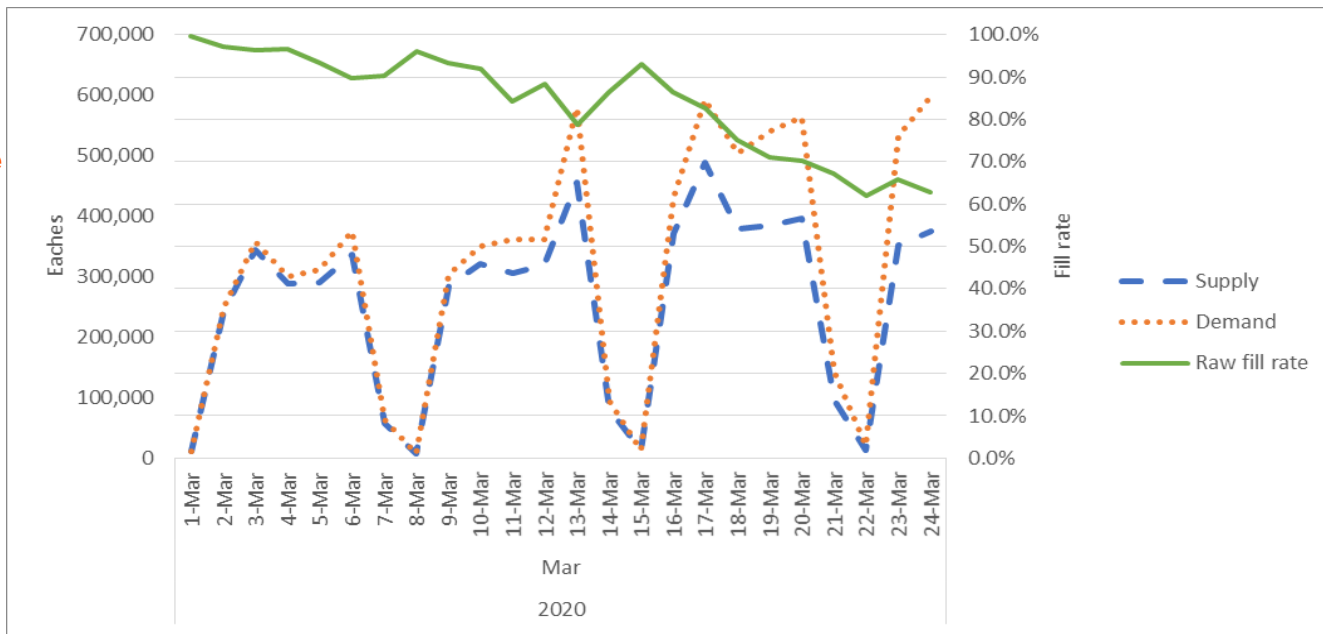
# COVID-19 impact on drugs essential for ventilator use

March 30, 2020

**vizient**<sup>®</sup>

# COVID-19 impact on sedative and anesthetic purchases

51% increase in demand for March



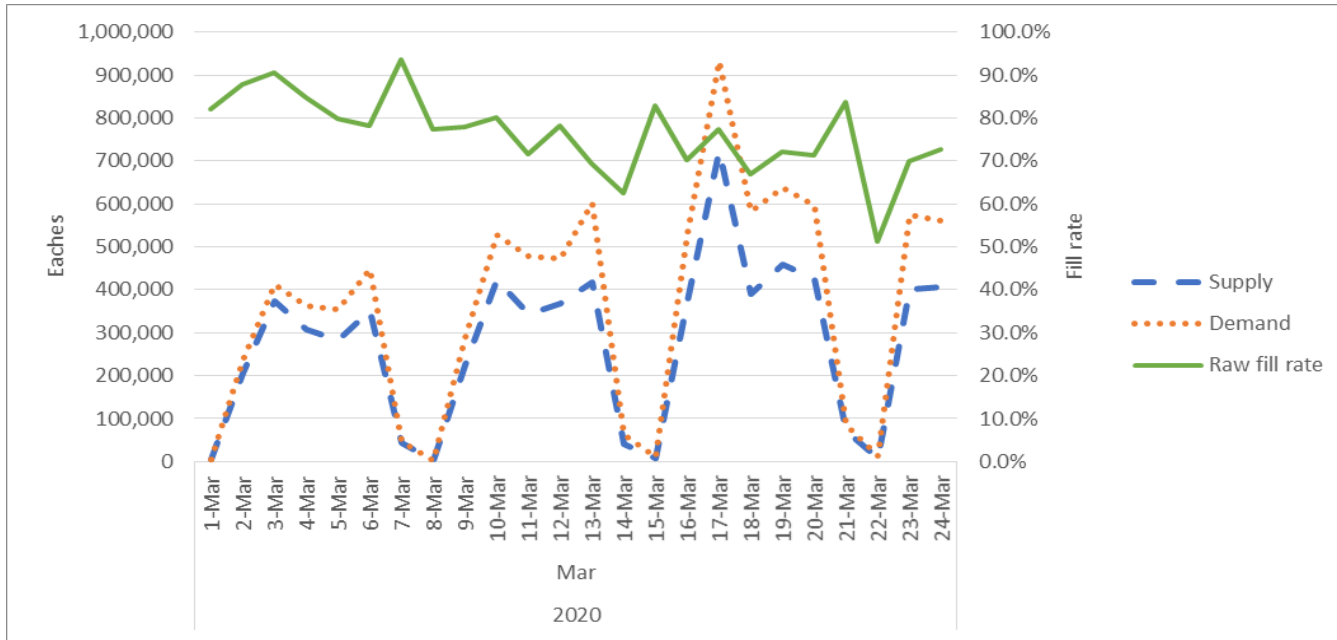
Fill rate drops to 63%

Evaluated:

- Dexmedetomidine
- Etomidate
- Ketamine
- Lorazepam
- Midazolam
- Propofol

# COVID-19 impact on analgesic purchases

67% increase in demand for March



Fill rate drops to 73%

Evaluated:

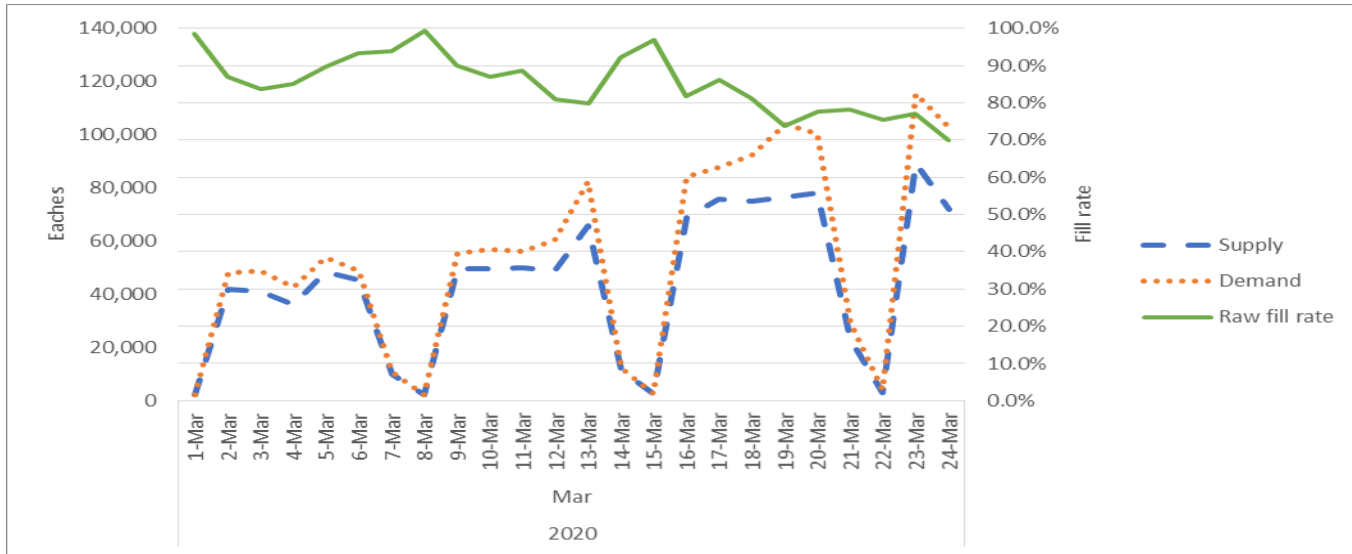
- Hydromorphone
- Fentanyl
- Morphine

# COVID-19 impact on neuromuscular blockers (NMBs) purchases

39% increase in demand for March

Evaluated:

- Cisatracurium
- Rocuronium
- Succinylcholine chloride
- Vecuronium



Fill rate drops to 70%

# Methodology

- **Vizient member purchase data was source for all eaches ordered and filled. Vizient serves more than half of the nation's hospitals and health systems.**
- **Eaches ordered was calculated by taking package size x units ordered**
  - Examples:
    - If 1 package of DIPRIVAN (propofol) 10mg/mL VIAL 10 X 100 ML VIAL NO LATEX, SINGLE USE were ordered then 10VIALS/package x 1 package ordered = 10 eaches ordered.
    - If 20 packages of FENTANYL CITRATE 50mcg/mL AMPUL 10 X 5 ML AMPUL LATEX-FREE, P/F were ordered then 10AMPUL/package x 20 packages = 200 eaches ordered.
- **Vizient member purchase data was source used to calculate fill rates based upon quantity of eaches sold (supply) divided by quantity of eaches ordered (demand).**
- **Data from March 1-24, 2020 was compared to baseline data from period January 2-25, 2020.**
- **The period of January 2-25, 2020 was used as a baseline due to the following events:**
  - January 30, the WHO declares COVID-19 a Public Health Emergency of International Concern
  - January 31, the U.S. Secretary of Health and Human Services declared the virus a U.S. public health emergency
  - January 31, the President of the United States signs proclamation to limit entry into the U.S. any persons having traveled to mainland China to U.S. citizens and lawful permanent residents and their families. Proclamation requires all travelers returning to the U.S. from China be redirected to one of 11 airports equipped with Centers for Disease Control and Prevention (CDC) quarantine stations.